

Number	22-004728-PR05 (NW-A01-06-en-01)
Owner	Kompen PVC Yapi ve Insaat Malzemeleri Sanayi Ticaret A.S. Konya Afyon Karayolu 45. Km. Ladik Mevkii 42435 Sarayönü - Konya Türkiye
Product	Double leaf sliding window
Designation	kom 1000 HAYLINE window system
Details	Overall dimensions (W x H) 1500 mm x 1500 mm; Material Polyvinylchloride unplasticized (PVC-U); Projected width from - to 101 mm - 138 mm; Structural depth 120 mm; Thickness of infill 24 mm; Edge cover of infill 14 mm; Reinforcement material Steel, galvanized; Casement; Designation 1015; Reinforcement: Cross section (W x H x T) 42.2 mm x 32 mm x 0.8 mm; Additional profile: Designation 1017; Frame; Designation 1001; Reinforcement: Cross section (W x T x H) 13.5 mm x 40 mm x 0.8 mm; Glazing; Configuration in mm 4/16/4; Dimensions (W x H) 2 x 562 mm x 1224 mm; Thermal transmittance U_g in $W/(m^2K)$ 1.1 (as specified by client); Spacer; Type representative metal spacer acc. to EN ISO 10077-2

Special features

Result

Calculation of thermal transmittance according to EN ISO 10077-1:2017-07, corrected version 2020-02



$$U_W = 1.6 \text{ W/(m}^2\text{K)}$$

ift Rosenheim

20.07.2023



Konrad Huber, Dipl.-Ing. (FH)
Head of Testing Department
Building Physics



Till Stübgen, Dipl.-Ing. (FH)
Operating Testing Officer
Building Physics

Basis *)

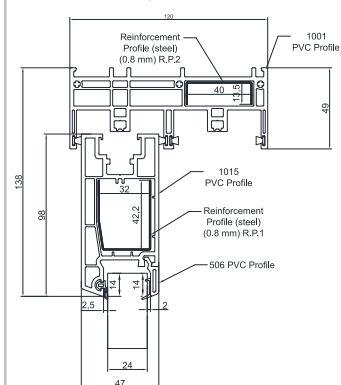
EN ISO 10077-1:2017-07, corrected version 2020-02

*) and corresponding national versions (e.g. DIN EN)

Test report: 22-004728-PR05 (PB-A01-06-en-01)

Representation

Cross section at top, external



Instructions for use

The results obtained can be used as evidence in accordance with the above basis.

Validity

There is no time limit.

When using this document the up-to-dateness of above basis and the conformity of the product have to be observed.

The data and detailed results given relate solely to the tested/described specimen.

This test does not allow any statement to be made on further characteristics of the present structure regarding performance and quality, in particular the effects of weathering and ageing.

Notes on publication

The ift-Guidance Sheet "Conditions and Guidance for the Use of ift Test Documents" applies.

Identity-Check



www.ift-rosenheim.de/ift-geprueft
ID: 06C-A70FF